

CEMENT CORPORATION OF INDIA LIMITED

(A Government of India Enterprise)

AN ISO 9001:2015 CERTIFIED COMPANY

TANDUR CEMENT FACTORY

PO: CCI-TANDUR - 501 158,

VIKARABAD Dist, (Telangana State)

Phone No.: 08411-247221

Fax No. : 08411-247243

GSTIN No.: 36AAACC0949B1Z5

CIN: U74899DL1965GOI004322

ECC No.: AAA CC 0949 BXM 006

mm_tdo@ccilttd.in, ccimm_tdo@rediffmail.com

Ref: TCF/MM/3034/22/92

Date: 09.08.2022

Sub:-Limited Tender for Supply of Spares for VRM Rocker Arm Yoke – Reg.

-:oOo:-

Interested parties may send your offer by POST in sealed covers containing two separate covers inside i) Credentials & Supporting documents and (ii) Commercial cum Price bid which should reach us before due date. If, the credentials are found suitable, the Techno-commercial bid shall be opened. The decision of the Corporation is final.

HOD (MM)

CEMENT CORPORATION OF INDIA LIMITED

(A Government of India Enterprise)

AN ISO 9001:2015 CERTIFIED COMPANY

TANDUR CEMENT FACTORY

PO: CCI-TANDUR - 501 158,

VIKARABAD Dist, (Telangana State)

Phone No.: 08411-247221

Fax No. : 08411-247243

GSTIN No.: 36AAACC0949B1Z5

CIN: U74899DL1965GOI004322

ECC No.: AAA CC 0949 BXM 006

mm_tdo@ccilttd.in, ccimm_tdo@rediffmail.com**SPEED POST**

Ref: TCF/MM/3034/22/92

REMINDER - I

DATE: 09.08.2022

Dear Sir(s),

Sub:-Our Enquiry No. TCF/MM/3034/22/92, Dt.04.07.2022, Due on 26.07.2022

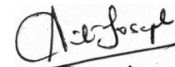
-: oOo :-

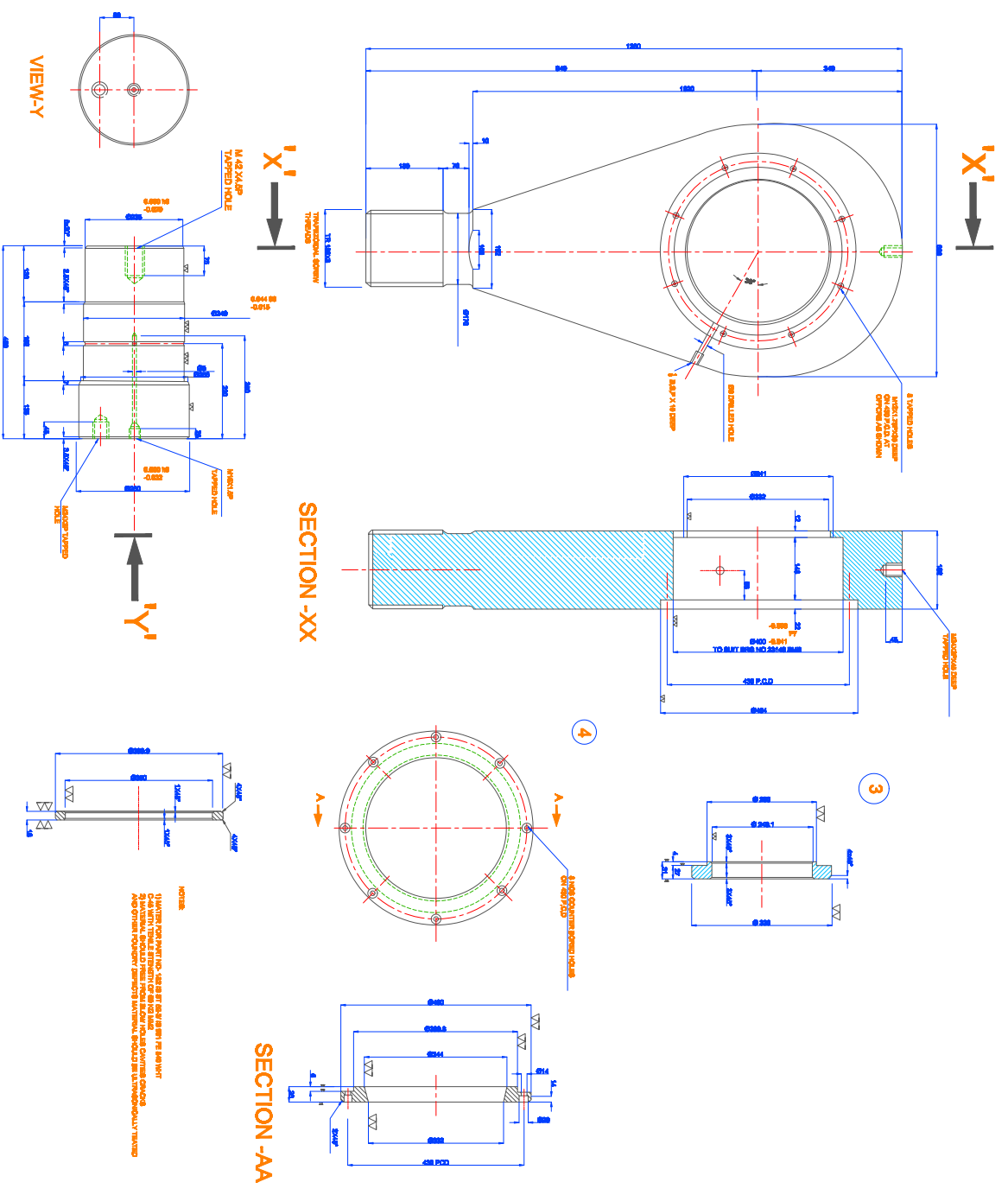
Your quotation against our above enquiry for the following items has not been received by us.

Sl.No.	Description	Quantity	Unit Rate	Amount
	Spares for VRM Rocker Arm Yoke (As per Drg.No.B,CCI-TDR/RM/2A.03/112 which was already sent along with original enquiry)			
01)	Pin, Part No.2	01 No.		
02)	Ring, Part No.3	02 Nos.		
03)	Ring, Part No.4	01 No.		
04)	Ring, Part No.5	01 No.		
	NOTE: The Unit rate shall include all the elements like Basic Rate, Freight & any other charges, excluding GST			

As a special case we are hereby extending the due date up to **30.08.2022**. You are requested to kindly send your quotation now, so as to reach us on or before the due date and time extended as above.

Thanking You,

Yours faithfully,
for CEMENT CORPORATION OF INDIA LIMITED,**AUTHORISED SIGNATORY**



NOTES

1) ALL DIMENSIONS ARE IN MM UNLESS OTHERWISE SPECIFIED

2) MATERIAL SHOULD BE STEEL UNLESS OTHERWISE SPECIFIED

3) ALL DIMENSIONS SHOULD BE WITHIN TOLERANCES

ITEM NO.	DESCRIPTION	QTY	UNIT	MATERIAL	REMARKS
1	ROCKER ARM	1	PC	STEEL	
2	ROCKER ARM	1	PC	STEEL	
3	ROCKER ARM	1	PC	STEEL	
4	ROCKER ARM	1	PC	STEEL	
5	ROCKER ARM	1	PC	STEEL	

CEMENT CORPORATION OF INDIA LTD.

DC-TOWER STREET, A-7, NEW

DRAWN BY: [Signature]

CHECK BY: [Signature]

DATE: [Date]

SCALE: 1:5

DWG. NO.: B-CO-1-DOR-RM-2A-03-112

TITLE: ROCKER ARM ASSEMBLY FOR LOESCHER MILL